



Programme for Infrastructure Development in Africa

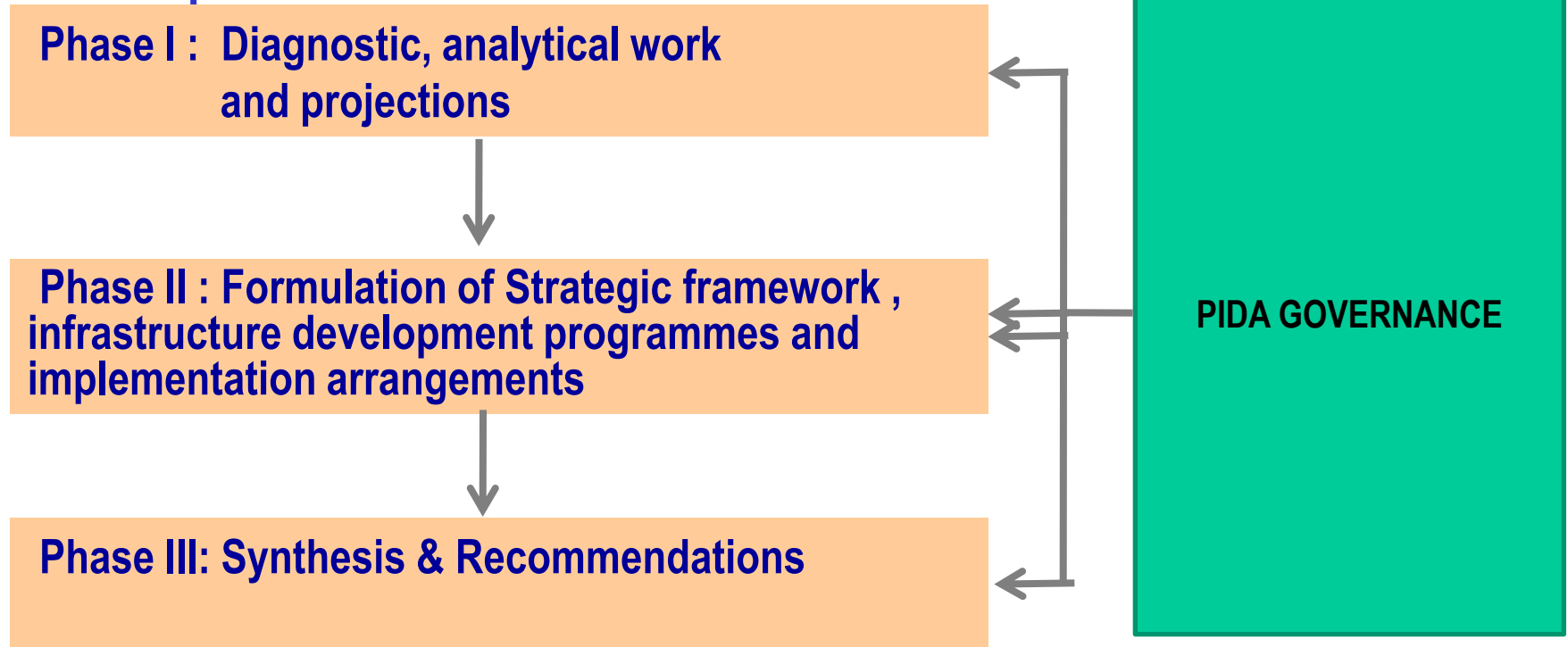
Progress & Way Forward
ICA Meeting – Tunis, 22 December 2010

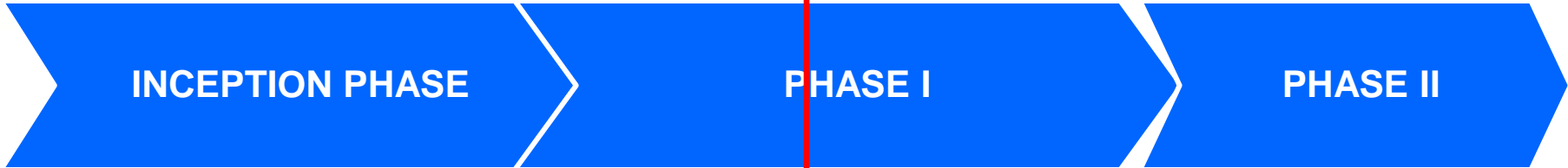
Ajiro Micah - PIDA Project Team



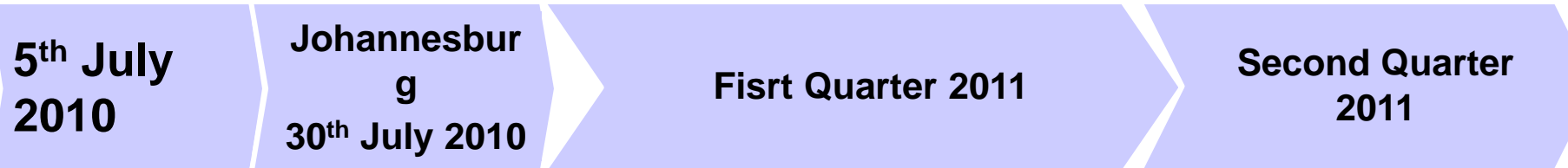
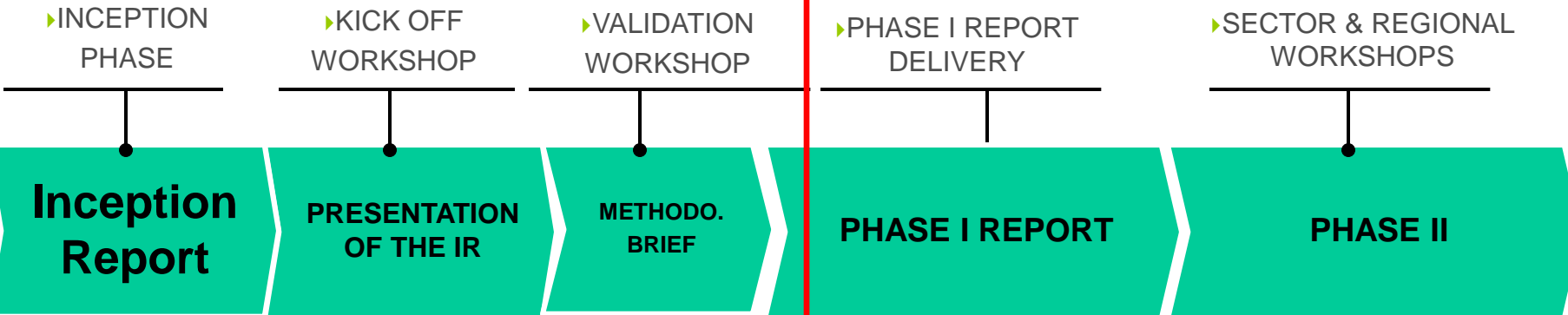
PIDA STUDY STRUCTURE

PIDA is structured in three phases of work in addition to Inception Phase:



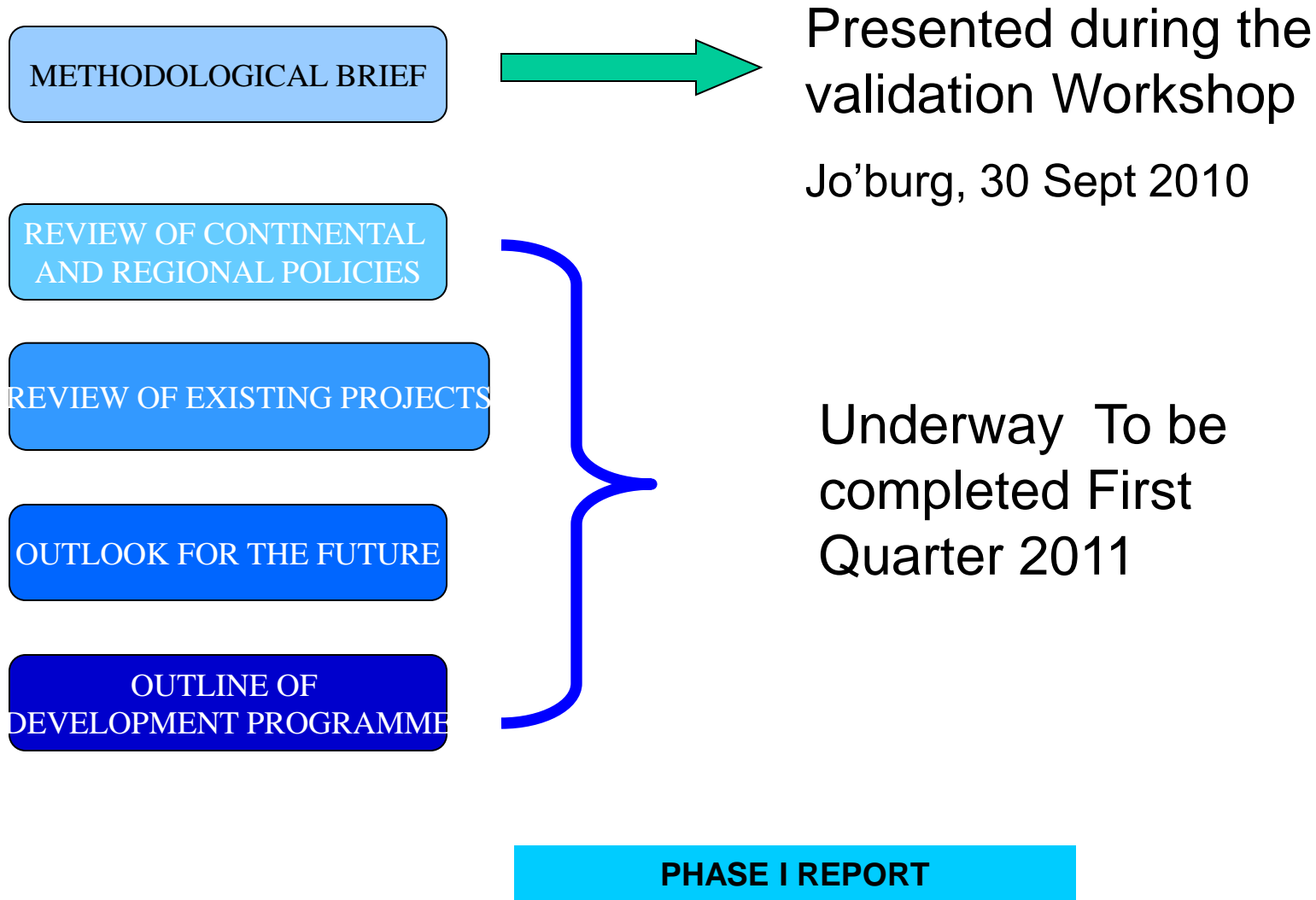


WHERE STUDY IS



PIDA STUDY STRUCTURE

Phase I – Diagnostic & Analysis



. STUDY STRUCTURE

INCEPTION PHASE (29-30 JULY 2010)

Inception
Report by the
Consultant

Thematic
notes: by panel
of experts

Vision:

Interconnected/ integrated
Infrastructure network &
services critical for sustainable
social and economic
development of Africa as an
economic bloc & for effective
participation in global economy

Core Principles:

- * Open Regionalism
- * Sub-sidiarity
- * Leveraging sovereignty for mutual benefits
- * Focus on strategic projects with high potential for regional cooperation & devt. impacts

OUTLOOK FOR FUTURE DEMAND

DEMAND

Demand for infrastructure services (over 2010-2040) is derived from GDP growth and the development of growth poles (agriculture , mining & services).

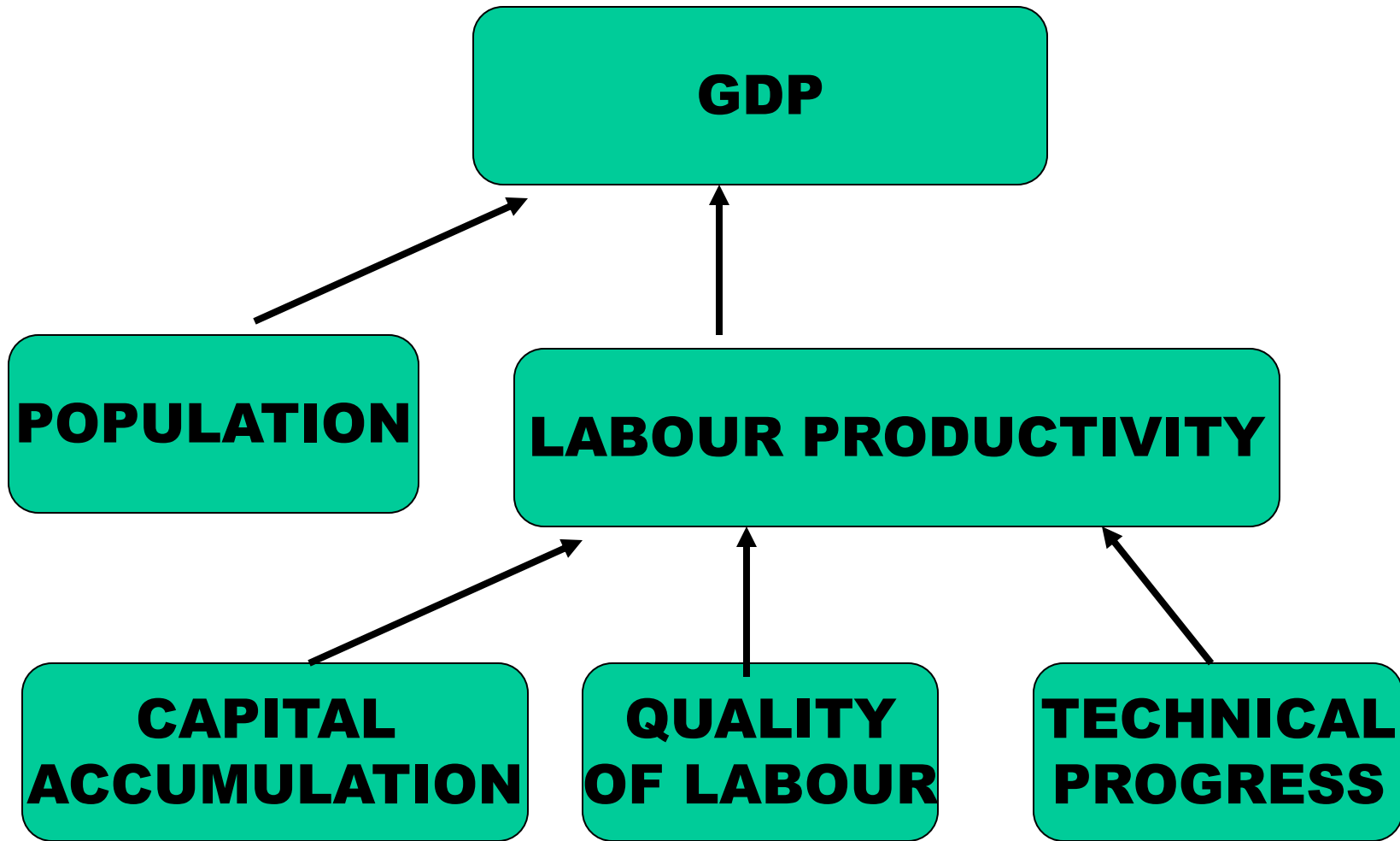
GROWTH

The growth rate for the continent is assumed to average 6% per annum in real terms.

MODELING TOOL

The Augmented Solow model is used to **distribute** the increased wealth according to growth drivers .

SIMULATION TOOL



OUTLOOK FOR FUTURE DEMAND FOR REGIONAL INFRASTRUCTURE

Demand in each sector is derived as follows:

TRANSPORT

- Link trade, GDP and population growth in a direct demand model per Transport Corridor

ENERGY

- Elasticity to GDP policies for Increased Access Rate

ICT

- Based on Traffic projections taking into account the population growth rate and increased access and connectivity

TWR

- Needs in terms of irrigation and domestic water uses will be assessed on the basis of Population growth rate and Economic growth rates

ESTIMATING SUPPLY RESPONSE TO REGIONAL INFRASTRUCTURE DEMAND

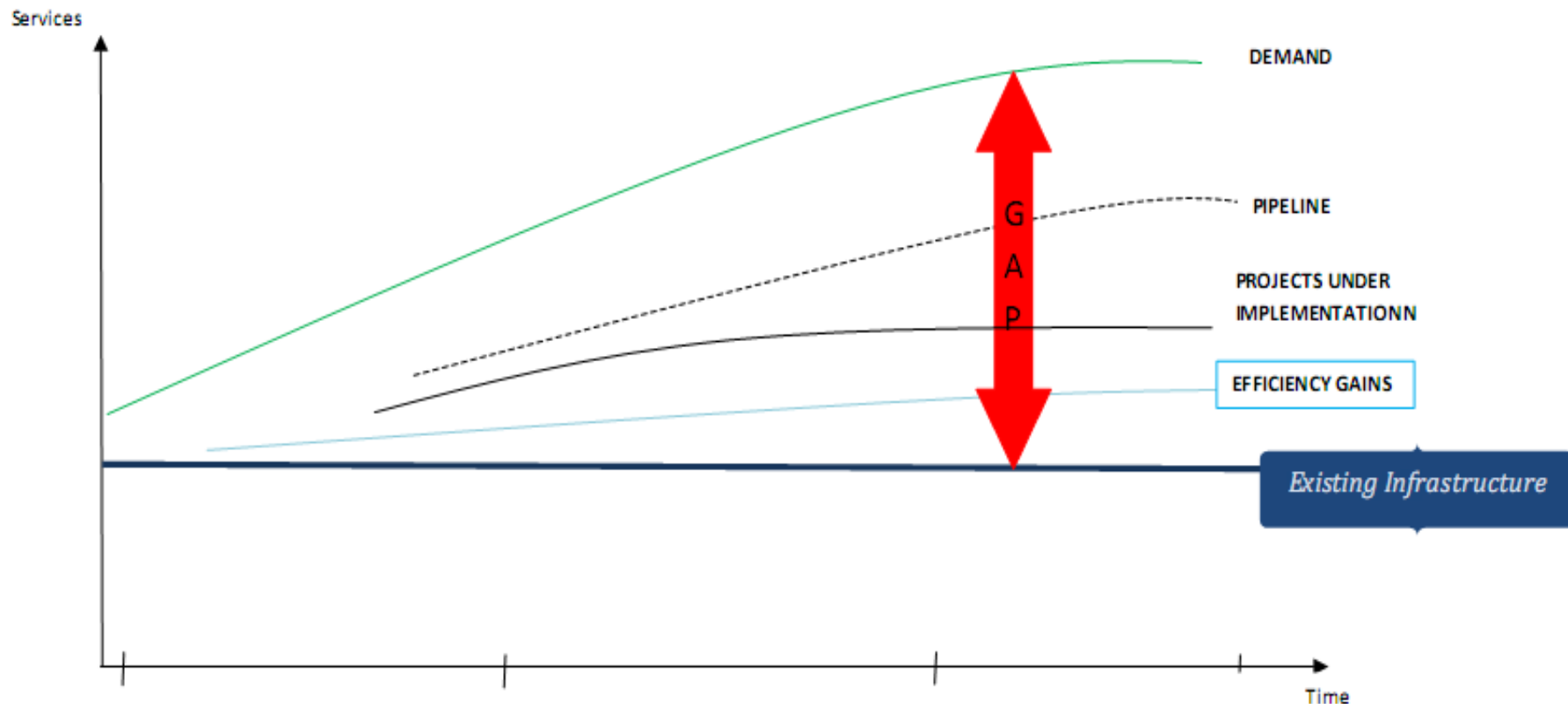
Evaluating Supply response in each sector is derived as follows:

Scope of existing regional and continental policies in each sector

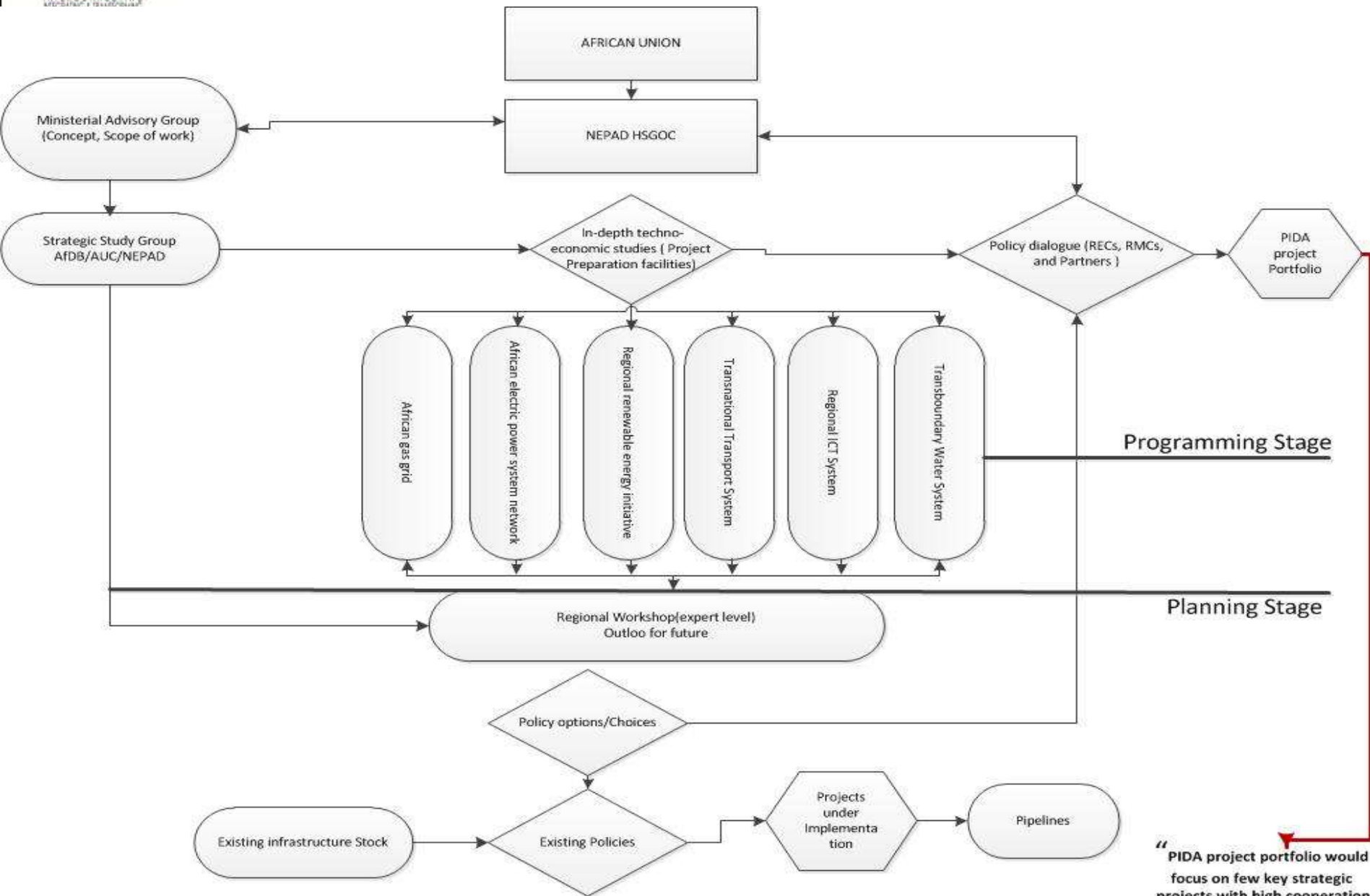
Policy Coherence Analysis/Policy gaps/Constraints

Infrastructure Service level supply projections based on population growth rate, increased access and connectivity

OUTLOOK FOR FUTURE DEMAND AND SUPPLY OF REGIONAL AND CONTINENTAL INFRASTRUCTURE



THE WAY FORWARD



“PIDA project portfolio would focus on few key strategic projects with high cooperation content”

Programming: Analysis Factors

A) Contribution to sustainable Development through Physical Integration:

1. Economic Dimension

- Increased trade in goods & services
- Attraction of Private Sectors in the REC as hub
- Increase in competitiveness of the REC

2. Social Dimension

- Creation of employment and income
- Improve the population standard of living

3. Environmental Dimension

- Natural Resources conservation
- Environmental Quality

Programming: Analysis Factors

B) Feasibility Factors:

1. Feasibility Elements

- Institutional & Regulatory Framework
- Consistency of current and future demands
- Environmental risk mitigation possibilities
- Operation & Execution conditions

2. Financing

- Capacity to attract private and /or public investment & PPP

3. Political Convergence

- Degree & symmetry of partners state convergence on project & sustenance of priority over time

COOPERATION WITH STRATEGIC PARTNERS



Cooperation and collaboration in the implementation of the PIDA projects portfolio;



Projects preparation support for prefeasibility and detailed techno –economic studies including identification of environmental and social implications;



Active involvement and support for policy dialogue;



Support in establishment of collaborative mechanism/agreement;



Sharing experiences from other regions in identifying possible challenges and opportunities



Financial support

MERCI
OBRIGADO
THANK YOU

شكرا